



GMT MONTHLY MEMBERSHIP PROGRESS REPORT

Results as of: 5/31/2025

Multiple District 3231

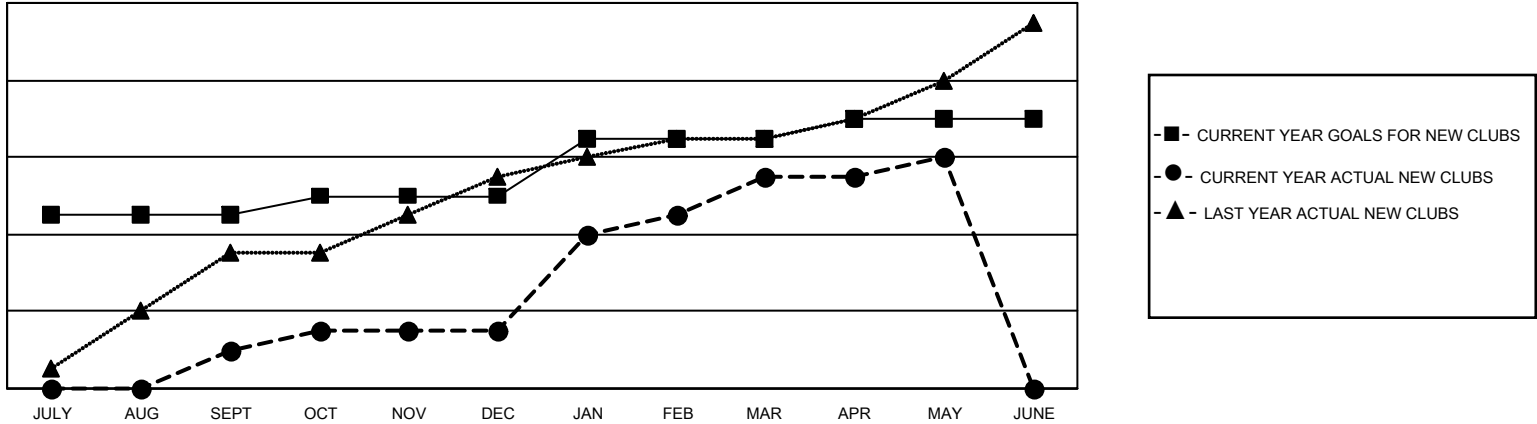
LOCATION: INDIA

GMT: OPEN

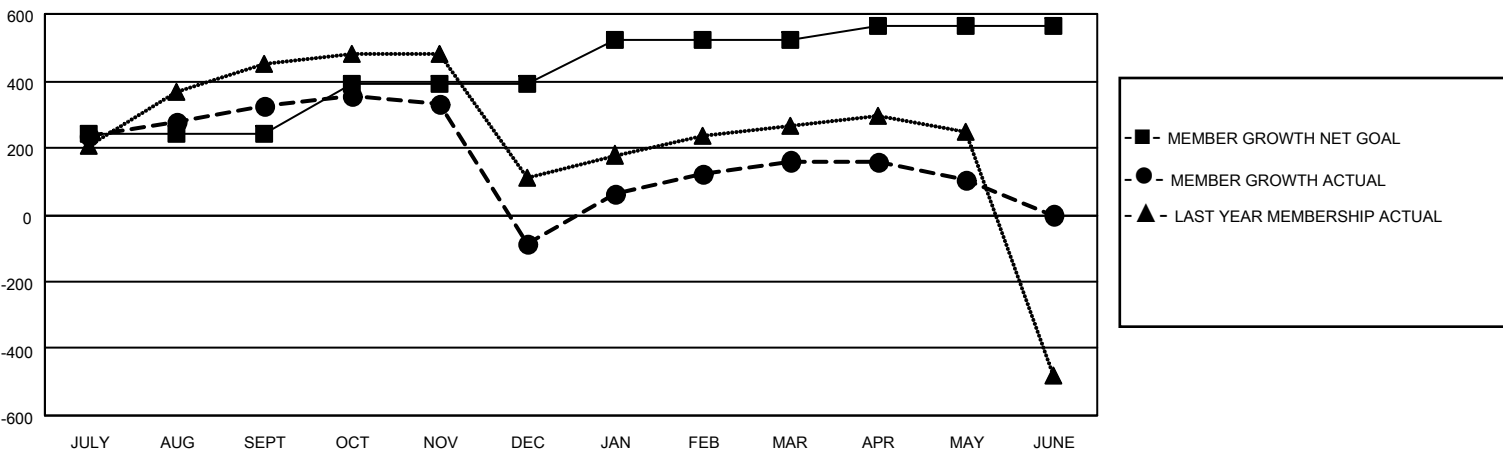
GMT CA 6 - I

| Clubs | | | | Members | | | |
|-----------------------|---------------|-----------|---------------|-----------------------|------------------------|----------------------|--|
| RESULTS FOR 2024-2025 | | | | RESULTS FOR 2024-2025 | | | |
| QUARTER | NEW CLUB GOAL | NEW CLUBS | DROPPED CLUBS | QUARTER | MEMBER GROWTH NET GOAL | MEMBER GROWTH ACTUAL | DROPPED MEMBERS ACTUAL (including transfers) |
| JULY/AUG/SEPT | 9 | 2 | 5 | JULY/AUG/SEPT | 241 | 616 | 223 |
| OCT/NOV/DEC | 1 | 1 | 10 | OCT/NOV/DEC | 150 | 250 | 633 |
| JAN/FEB/MAR | 3 | 8 | 4 | JAN/FEB/MAR | 130 | 509 | 180 |
| APR/MAY/JUNE | 1 | 1 | 2 | APR/MAY/JUNE | 45 | 183 | 180 |

GOALS AND ACTUAL NEW CLUBS CUMULATIVE



GOALS AND ACTUAL MEMBERS CUMULATIVE



| | | | | |
|------------------------|--|---|---------------------------------------|----------------|
| DROPPED CLUBS: 21 | | 182 CLUBS OF 306 ADDED 1 OR MORE NEW MEMBERS | <u>GENDER DISTRIBUTION</u> | |
| | | | MALE | 6,484 (62.38%) |
| | | | FEMALE | 3,910 (37.62%) |
| <u>DROPPED MEMBERS</u> | | CLICK HERE FOR CUMULATIVE MEMBERSHIP DATA | | |
| DECEASED 52 | | | TOTAL FAMILY UNIT MEMBERS 4,723 | |
| CLUB CANCELLED 218 | | | | |
| OTHER 944 | | | FAMILY MEMBERS PAYING HALF DUES 2,509 | |
| TOTAL 1,214 | | | | |